

U.S. Customs and Border Protection Modernization and the Automated Commercial Environment (ACE)

Angela Chambers

September 2006



U.S. Customs and
Border Protection

Automated Commercial Environment (ACE)

ACE Overview

ACE e-Manifest: Trucks

Entry Summary, Accounts, and Revenue (ESAR)

Questions and Feedback



U.S. Customs and
Border Protection

ACE Overview

ACE is the new U.S. trade processing system designed to consolidate and automate border processing to significantly enhance border security and foster our nation's economic security through lawful international trade and travel.

Allows trade participants to better manage their trade information

Facilitates efficient collection, processing, and analysis of commercial import and export data

Provides an information-sharing platform for trade data throughout the government via the International Trade Data System (ITDS)

Expedites legitimate trade by providing CBP with tools to efficiently process imports/exports and move goods quickly across the border

Improves communication, collaboration, and compliance efforts between Customs and Border Protection (CBP) and the trade community

Increases visibility into the supply chain



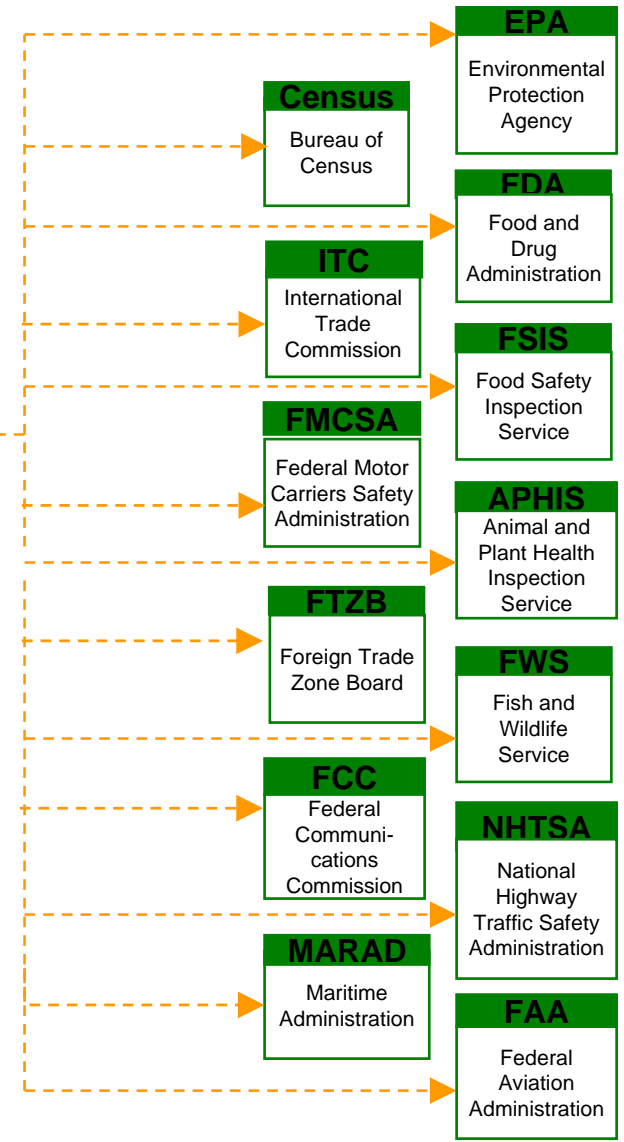
**U.S. Customs and
Border Protection**

Single Window to the Government

TRADE:
Importers,
Brokers,
Carriers, and
Exporters



ACE begins to integrate Participating Government Agencies (PGA) to allow a single window to the Government for the trade community. Through the ITDS, more than 80 targeted government agencies will be integrated throughout the full rollout of ACE.



U.S. Customs and
Border Protection

Deployed in Phases

ACE, through staged development and implementation, will replace the current Automated Commercial System (ACS) as the sole processing system of record for CBP.

Coming Now

- **e-Manifest: Trucks**
(deployment started, will continue through Spring 2007)

New features related to ACE

- **Screening & Targeting (S&T)**

2000 - 2004

2005 - 2006

2007 - 2011



ACE: Up and Running

- **Foundation**
- **Account Creation**
- **Periodic Payment**

Future Features of ACE

- **Entry Summary, Accounts, and Revenue**
- **Cargo, Transactions and Enforcement**
- **Additional S&T Features**



U.S. Customs and
Border Protection

ACE e-Manifest: Trucks Feature

- The e-Manifest feature in ACE:
 - Automates truck manifest filings with CBP
 - Interfaces with current release processes
 - Consolidates CBP release mechanisms
 - Utilizes both EDI and ACE Secure Data Portal technologies
 - Incorporates transponder & proximity card technology
 - Supports in-bond processing



Why ACE e-Manifest: Trucks?

- Trade Act of 2002 mandates electronic presentation of advance cargo information.
- Carrier participation in electronic manifest alleviates dependency on the broker for Trade Act compliance. An e-Manifest submitted in a timely manner complies with the requirements of the Trade Act.
- Getting in on the ground floor gives your company more time to prepare, gives your company better customer service from CBP, and makes you compliant with trade laws.



Broker and Carrier Communication

It is imperative that brokers and carriers communicate in order to coordinate the entry and manifest.

- A Customs entry must properly reference the corresponding manifest shipment record or records.
- What is called a shipment control number (SCN) on the manifest must correspond with the Customs entry master bill of lading number.
 - On the northern border this number is usually the carrier's Standard Alpha Carrier Code (SCAC) plus the pro-bill number.
 - On the southern border this number is usually the carrier's SCAC plus the Customs entry number.
 - Today this number is often referred to as the PAPS number.
 - This number must be unique, must start with a valid SCAC, must be the same between entry declaration and manifest shipment declaration.
 - Multiple SCNs can be reported on one Customs entry. This is often referred to as a consolidated entry at land border crossings.

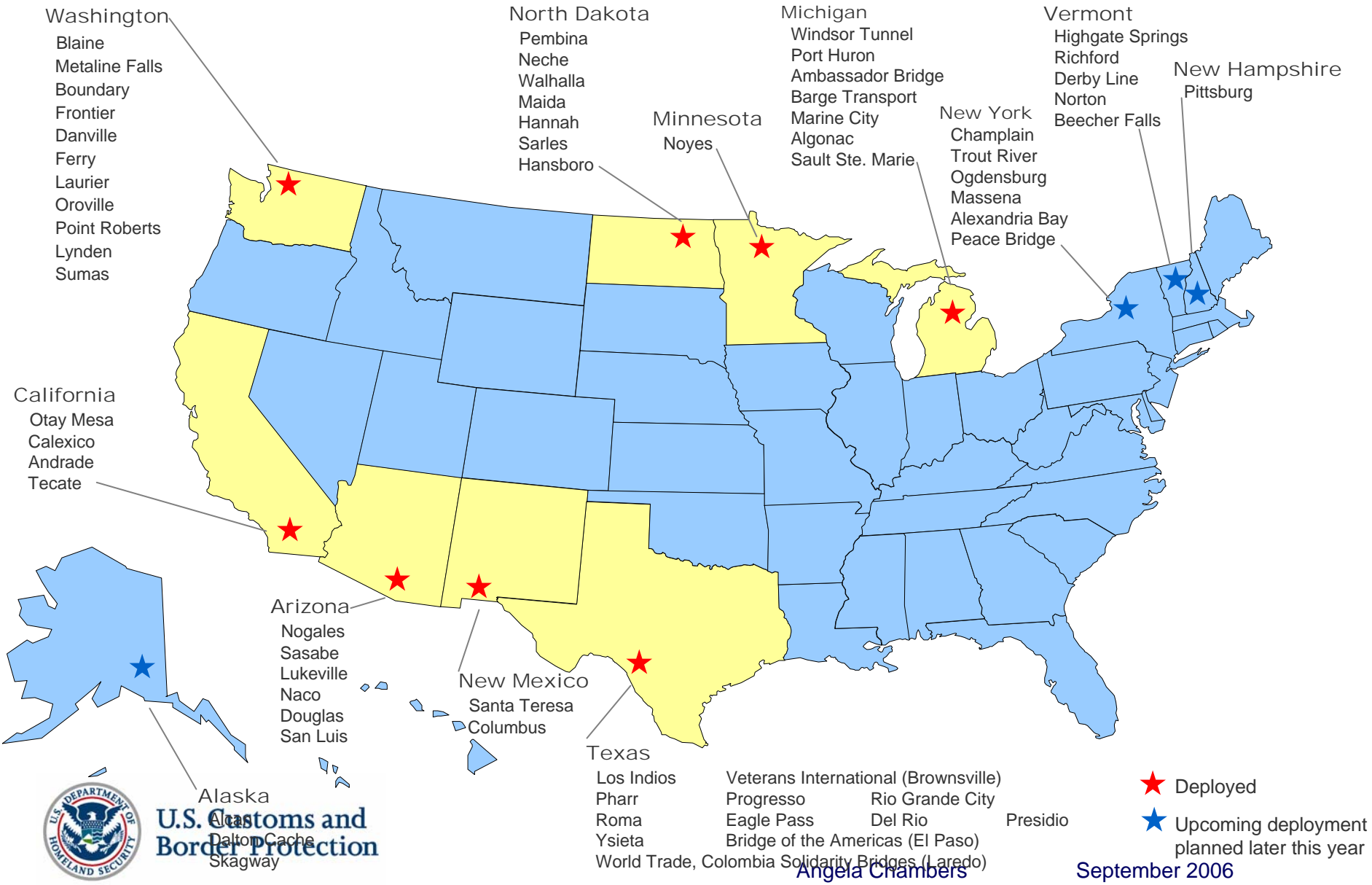


Broker and Carrier Communication

- No “Bill Control Number” (BCN) should currently be reported by the carrier. No “House Bill” or “Sub-House Bill of Lading” should be reported by the entry filer.
- Total manifest piece count must match between entry and shipment declarations.
 - Manifest quantity reported in both entry and shipment records must report the lowest external packaging unit; containers and pallets are not acceptable manifest quantities.
 - Manifest descriptions cannot be generic. You may not say “freight of all kind” or “general merchandise.”
 - The lowest external unit for many bulk shipments would be a tank trailer. CBP will accept unit of quantity of one for bulk shipments.
 - Gross weight in pounds or kilograms must always be reported for manifest shipment declarations.



ACE Port Deployment



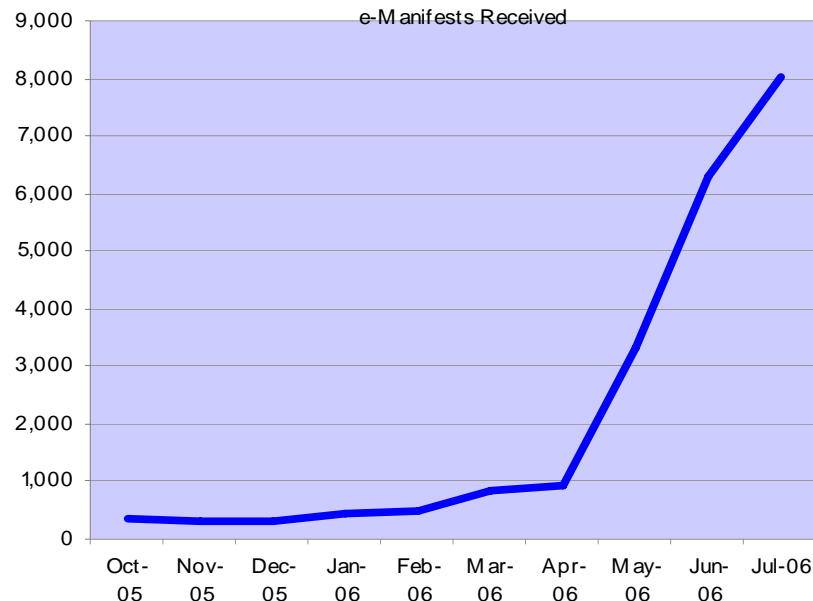
Angela Chambers

September 2006



e-Manifest: Trucks Operational Status

- **Deployed ACE to 47 Land Border Ports**
 - Completed deployment at Southern Border
 - ACE processing 170,000 trucks per week
 - Deployment projected to be complete in April 2007
 - Begin phased implementation of mandatory e-Manifest by end of 2006 calendar year
- **Received 8,009 e-Manifests in July 2006**
 - *18 percent of shipments at ACE ports processed via e-Manifests*
 - *Over 330 companies certified to file e-Manifests via Electronic Data Interchange*



U.S. Customs and
Border Protection

Entry Summary, Accounts. and Revenue (ESAR)



U.S. Customs and
Border Protection

Angela Chambers

September 2006

ESAR – High Level Functional Scope

ESAR – A1

Master Data and Enhanced Accounts

Master Data /

Reference Data:

- Accounts Master Data (Profiles)
- Tariffs
- Manufacturer Ids
- Organizational Data (Port / FIRMS Codes)
- Countries
- Reference Data to support A1

Functionality:

- Create Accounts
- Maintain Account Master Data
- Maintain Account Interactions
- Maintain HTS Master Data
- Cross Account Access
- Program Participation

Account Types:

- Broker
- Carrier (all modes: air, rail, sea, truck)
- Commercial Driver
- Importer
- Consignee
- Surety
- Cartman
- CES
- CFS
- Third Party Claimants
- Foreign Trade Zone Operator
- Lighterman
- Service Provider
- Warehouse Operator
- Manufacturer ID/ Shipper (view)

ESAR – A2

Entry Summary and Revenue

Reference Data:

- Reference Data to support A2

Functionality:

- Entry Summary Processing
 - Liquidation/Closeout
 - Post Summary Corrections
 - Reconciliation Processing
 - Quota/Visa Processing
 - Team Review Processing
 - AD/CVD Processing
 - Licenses, Permits, Certificates (LPC)& other documents
 - Program Participation
 - Managed Accounts
 - CSI
 - Prior Disclosure Processing
 - Protest Processing
-
- Finance Processing
 - Accounts Receivable
 - Collections & Receipts
 - Refunds
 - Bond Application Storage
 - Bond Sufficiency
 - Drawback Financials

Post Release, Accounts

Finance

ESAR – A3

Drawback, Protest and IASS

Reference Data:

- Reference Data to support A3

Functionality:

- Drawback Processing
- IASS Processing
- Enhanced Protest Processing

Account Types:

- Claimants (Drawback)
- USPPI



Master Data & Enhanced Accounts (A1)

Enhances account creation and maintenance using SAP Customer Relationship Management (CRM).

Provides portal for data management and edit checking.

Expands on prior ACE releases by adding most account types and corresponding system master data.

Establishes ACE as the lead system for all master data elements required by any CBP system.

Expands the current importer, broker, and carrier accounts management activities to treat “any entity” doing business with CBP as an account.



Entry Summary and Revenue (A2)

Includes Post Release capability: entry summary; liquidation & closeout processing; protest and reconciliation processing; calculation of duties, taxes, & fees at a national level; interest; bond sufficiency; and PGA interfaces; among other capabilities.

Entry summary processing will include Quota, AD/CVD, FDA/BTA and all other components of entry summary processing.

Uses integrated components to deliver the entry summary business process through liquidation.

Includes general ledger, accounts receivable, funds management and bond processing.



Drawback, Protest and IASS (A3)

Drawback, Protest, and IASS (Drop A3) will contain other functionality including Drawback, Import Activity Summary Statement (IASS), Protest, and reference data to support Drawback, Protest, and IASS (Drop A3) transactions.

The implementation of the IASS will constitute a major change to the current commercial process for CBP, PGAs, and the trade community. There will be an impact to the existing CBP and PGA users who will utilize the expanded capabilities. However, at this point, most users will already be using ACE, so familiarity with the form and feel of the system will allow rapid assimilation of new functionality with only limited training.

Enhanced Protest Processing.



Questions and Feedback

For full participation requirements and other program details, please refer to the various Federal Register Notices which can be found under the Federal Register Notice link on www.cbp.gov/modernization.

For more information,
visit “ACE: Modernization Information Systems”
at www.cbp.gov/modernization
or send an e-mail to: CBP.CSPO@dhs.gov



U.S. Customs and
Border Protection